



Policy Equity Conference: Expanding Economic & Workforce Development Opportunities

MARCH 29-30, 2024



WELCOME!

**INEQUITY IS THE LEADING PROBLEM OF OUR TIME.
COMMUNITY WISDOM + PUBLIC POLICY + ACTION IS A SOLUTION.**

"If you want to go fast, go alone; but if you want to go far, go together." – African Proverb

In the work many of us do, we often forge ahead in our individual silos. Local policy leaders and community-based organizations often lack rigorous data and analysis about which policies, strategies or investments are most effective, while academics often lack context and fail to apply their expertise to the most pressing social issues, creating a gap between knowledge and practice. Community to Community (C2C) Impact Engine was born out of the belief that we are stronger, and can go farther when we take the time to work together in authentic partnerships. We are guided by the belief that by building trust, listening to each other's stories, and centering the wisdom of communities that we can achieve greater social impact and bridge the gaps between academia, community members, and policymakers to forward solutions that are both systemic and equitable. C2C hopes our "Engage, Think, and Do" model offers a pathway for the university to be a contribution and asset to our communities. We invite your ideas, your passion, and your partnership to help bring this vision to fruition.

PROGRAM OVERVIEW

- 8:00 am** **Breakfast/Networking**
- 9:00 am Welcome + Opening Remarks
- 9:30 am Keynote: Nwamaka Agbo, Director, Kataly Foundation;
Fireside Chat with Alfredo Matthews III, ESO Ventures
- 10:10 am Mindful Moment, Black to Yoga
- 10:15 am Panel 1: Youth + Opportunity: Expanding Summer Youth Employment Programs
- 11:30 am Panel 2: Equity, Entrepreneurship + AI: Ensuring Educational Pathways to Prosperity
- 12:45 pm** **Networking Lunch**
- 1:50 pm Mindful Moment, Black to Yoga
- 2:00 pm Panel 3: Climate Equity + Jobs
- 3:15 pm Panel 4: Housing + Workforce Development: Intersectional Strategies
- 4:30 pm Performance by Oakland Youth Poet Laureate Nairobi Barnes

LAND HONORING + WELCOME



Ras K'dee is a Native California Pomo/African musician, community educator, lyricist, producer, & lead vocalist/keyboardist for Bay Area-based world hip-hop ensemble, Audiopharmacy. K'dee invokes the songs and dances from traditional ceremonies of his native people, and tells stories of resistance, healing, community & empowerment. He is the founder of The NEST Community Arts Center, an Indigenous led, sustainably-built hub for all artists. In 2003, K'dee co-founded (and is the current director) of a Native youth media organization Seventh Native American Generation (SNAG) whose annual publication features the art, photos, music and writing of Indigenous Youth. K'dee leads summer workshops with Youth and is a producer and occasional co-host of the radio program "Bay Native Circle" on 94.1 FM in Northern California.

Latest music:

<https://ffm.to/listentoya>

<https://ffm.to/nutrients>

KEY NOTE + FIRESIDE CHAT:

RESTORATIVE ECONOMICS: EXPANDING INNOVATIVE INVESTMENT TOWARD COLLECTIVE STEWARDSHIP, OWNERSHIP, AND GOVERNANCE

FRIDAY, MARCH 29, 2024 • 8:00 am - 5:00 pm

POLICY EQUITY CONFERENCE
EXPANDING ECONOMIC & WORKFORCE
DEVELOPMENT OPPORTUNITIES

KEYNOTE: FIRESIDE CHAT
Restorative Economics + Small Business: Investing in
Strategies to Create Economies that Work for All

Nwamaka Agbo



CEO, Kataly Foundation; Managing Director, Restorative Economies Fund
Kataly Foundation moves resources to support the economic, political, & cultural power of Black & Indigenous communities, and all communities of color. By transforming our relationship to capital, the planet, & each other, we will redistribute & redefine wealth in a way that leads to transformation, abundance, and regeneration.

Alfredo Mathews III



Co-Founder & Partner, ESO Ventures
ESO provides Black and Brown communities with the confidence, competence, and capital to take their early-stage business idea to the next level through investment, commitment, entrepreneurship, and networks. Based in East Oakland, we're addressing economic, racial, and gender gaps for entrepreneurs.



We launch this conference with the wisdom and innovative frameworks currently being put into action by [Nwamaka Agbo](#) and her team at [Kataly Foundation](#) and her work as managing director of the Restorative Economies Fund. In conversation with [Alfredo Mathew III](#), Co-founder of [ESO Ventures](#), Agbo will share about the fund's investments which are building new economic models to support community ownership, governance, and collective asset management at the grassroots level -- models which account for externalities not commonly accounted for in traditional economics. With a focus on the entrepreneurial ecosystem in East Oakland and other underinvested communities in the Bay Area, Alfredo brings the perspective of the critical need for capital access to small businesses and community based economic development. This opening session will help frame the day by exploring pathways to an Asset Based Community Development model for the City of Oakland, focused on regeneration, shared prosperity, reconciliation and repair.

YOUTH + OPPORTUNITY: EXPANDING SUMMER YOUTH EMPLOYMENT

Robust summer youth employment programs are held up across cities as an investment with exponential benefits. C2C Director Dr. Alicia Modestino's decade of engaged research shows that supervised work experiences improve high-school graduation rates and boost students' employability, and family finances. With benefits that last beyond the summer, youth jobs programs have a crucial role to play to shift economic disparity and build community wellness. Young people who have access to purposeful activities during the summer develop skills, and build strength and confidence. Meaningful paid earn-and-learn programs also provide extra income to support young people and families. With limited unrestricted funding sources, cities often choose quantity over quality, and federal dollars limit wages and fail to pay for the cost of administration and the full scope of needs, including transportation, health services, and housing. Oakland needs innovative investments and policies so that every youth can participate and be successful. The work to break down silos and deepen partnerships between city departments, providers, and industry is growing.

Ximena Montes
The Unity Council

Selena Wilson
East Oakland Youth Development Center

Nicholas Brown
Lao Family Community Development

Quinallison Dovey
Oakland Workforce Development Board

Facilitated by: Sofia Navarro
City of Oakland, Economic & Workforce Development Dept.

POLICY EQUITY CONFERENCE
EXPANDING ECONOMIC & WORKFORCE DEVELOPMENT OPPORTUNITIES
FRIDAY, MARCH 29, 2024 • 8:00 am - 5:00 pm
PANEL EVENT: Youth + Opportunity: Expanding Summer Youth Employment

C2C
IMPACT ENGINE

YOUTH + OPPORTUNITY: EXPANDING SUMMER YOUTH EMPLOYMENT

Today's panel is facilitated by [Sofia Navarro](#), Interim Director of the City of Oakland's Economic and Workforce Development Department, is working to build bridges between city departments and innovative approaches to investment with the Oakland Workforce Development Board, and service providers.

[Quinallison Dovey](#) is the Youth Program Analyst at the [Oakland Workforce Development Board](#), As a child of Oakland's Fruitvale neighborhood, she understands firsthand the need to both expand and deepen services to address systemic challenges and create more access. By collaborating with the OFCY and dozens of providers she supports recipients navigate complex state regulations.

Nicholas Brown serves as the Youth Program Supervisor at [Lao Family Community Development](#), which serves hundreds of young people in summer youth programs and provides wrap around supports through a multi-partner, integrated care model to address homelessness and other economic barriers.

Ximena Montes, serves as Associate Director of Youth Services at [The Unity Council](#). Their youth Career Services offer case management, resume development, paid job readiness trainings and paid internships. The Unity Council has served generations of youth and adults through their housing, early childhood, small business, and other integral programs.

[Selena Wilson](#) is the CEO of [East Oakland Youth Development Center](#), which has served youth from systemically marginalized Black and Brown communities for more than three decades. EOYDC's Project JOY (Job Opportunities for Youth) program delivers comprehensive employment readiness and support services to youth ages 14-24. Their model honors children who are survivors of trauma and builds trust and confidence to develop successful adults, who often come back to serve as leaders at EOYDC.

EQUITY, ENTREPRENEURSHIP + AI: ENSURING PATHWAYS TO PROSPERITY

Today's panel looks at the intersections between AI/technology, entrepreneurship, and their social equity implications. The work to ensure equitable and inclusive access to STEM/STEAM education and exposure to career pathways in related industries continues to be critical to creating a fair, inclusive and thriving economy. For every new industry, communities that have been historically underestimated and therefore underrepresented have had to carve out inroads and opportunity. In recent research, Dr. Joy Buolamwini of the Algorithmic Justice League has revealed the depth of bias and error generated by AI tools across companies. For our future wellbeing, humanics, and gender and racial justice must be prioritized in tech design, education pathways, and career opportunities – as humans from all lived experiences must be at the center of these fast-paced industries that range from traditional machine learning to advanced creative applications that require both caution and engaged optimism.

Today's panelists work in diverse, overlapping sectors and roles that touch technology, education, access, and business. Facilitator, [Carrie Maultsby-Lute](#), is a longtime Oaklander, higher ed educator, DEI and marketing professional, and community bridge-builder serving as [Northeastern University Oakland's](#) Head of Partnerships building experiential educational opportunities with local industry.

Damon Packwood
Gameheads

Christie Chung
Mills Institute

Ahmed Ali Bob
Block

POLICY EQUITY CONFERENCE
EXPANDING ECONOMIC & WORKFORCE
DEVELOPMENT OPPORTUNITIES
FRIDAY, MARCH 29, 2024 • 8:00 am - 5:00 pm
**PANEL EVENT: Equity, Entrepreneurship + AI:
Ensuring Educational Pathways to Prosperity**

Ben Wanzo
ESO Ventures

Facilitated by: **Carrie Maultsby-Lute**
Northeastern University

C2C
COMMUNITY TO COMMUNITY
IMPACT ENGINE

EQUITY, ENTREPRENEURSHIP + AI: ENSURING PATHWAYS TO PROSPERITY

[Ahmed Ali Bob](#) serves as the Chair of the Oakland Workforce Development Board and as the Global Social Impact Lead of [Block, Inc.](#), committed to creating tools to serve the financial and technical needs of small businesses and creative entrepreneurs. Ahmed started as a community health advocate, helping victims of gun violence move forward in a positive way. Ahmed led the opening of the Square office in Oakland and supports entrepreneurs, artists, and nonprofits to participate in the local economy and community development.

An Oakland, CA native, [Benjamin Wanzo](#) is a founding partner at ESO Ventures. He earned a BA in Applied Mathematics from the University of California, Berkeley and an MBA from Stanford University Graduate School of Business. As a small business owner, Ben founded TeachBar, Inc., a social impact company that ensured people of all walks of life accomplished academic and career goals. Ben has worked in tech and management consulting at McKinsey & Co. and is also a professor of business, teaching entrepreneurship, small business management, and digital marketing.

[Dr. Christie Chung](#), senior academic leader, longtime professor, researcher, and executive director of [The Mills Institute](#) is leading efforts to advance gender and racial justice through transformative programming, research and partnerships. She has served as Associate Provost, Associate Dean, and many other key Chair and leadership positions at both R1 university and liberal arts college settings. Christie is an expert in change management and is dedicated to coaching leaders and executives through a lens of compassion, integrity, and equity.

[Damon Packwood](#) is executive founder and director of the acclaimed training program, [Gameheads](#) that through training and building cohorts empowers BIPOC and low-income youth to access careers in tech and video gaming. A native San Franciscan, Damon was motivated to pursue tech education when he watched the city's working-class community disappear with the rise of the Bay Area tech industry while his early students couldn't get jobs after graduating college. His passion for education, interactive media, and multiculturalism led him to a master's in multimedia tech with an emphasis on interactive design. Damon believes in building diversity from the ground up.

CLIMATE + JOBS: ADVANCING EQUITABLE GREEN ECONOMIES



Joseph A. Billingsly
Civicorps

Shayna Hirshfield-Gold
City of Oakland,
Sustainability & Resilience Division

Glendie Domingo
Rising Sun Center
for Opportunity

POLICY EQUITY CONFERENCE
EXPANDING ECONOMIC & WORKFORCE
DEVELOPMENT OPPORTUNITIES
FRIDAY, MARCH 29, 2024 • 8:00 am - 5:00 pm
**PANEL EVENT: Climate + Jobs: Advancing
Equitable Green Economies**

Eric Shanks
Cypress Mandela, Inc.

Facilitated by: Alli Chagi-Starr
Community to Community
Impact Engine



California is faced with increased risk due to wildfire, sea level rise, and droughts. The state produces a high percentage of carbon, but also leads the charge to address climate resilience and "just transition" strategies for vulnerable communities. With state funds targeted for electrification and decarbonization efforts, workforce development stakeholders have an important opportunity. State-wide clean energy policies will create job opportunities in transportation, building construction, fire mitigation, and other industries as we move toward a clean-energy economy where all buildings and transportation run on clean energy. Climate resilience jobs are not always seen as low hanging fruit, but advocates for expanding workforce development outcomes have worked for years to expand clean economy career pathways. It is critical that training pathways include those who have been historically underestimated and thus underrepresented.

CLIMATE + JOBS: ADVANCING EQUITABLE GREEN ECONOMIES

Facilitated by [Alli Chagi-Starr](#), Regional Director, C2C Impact Engine. Alli has served in numerous leadership roles in education, arts, social justice, green jobs, college access, and economic/workforce development, always with a drive to advance social impact through building trust and authentic connection. For 25+ years, [Eric Shanks](#) and team at [Cypress Mandela](#) have offered free training to prepare students for careers in the building trades, green construction, solar/weatherization, and other high paying careers. The program teaches skills such as electrical and plumbing fundamentals, job safety, environmental training, solar fundamentals, and more.

[Eric Shanks](#) has over three decades of experience in the public and private sectors of community and economic development. Working on litigation involving the Exxon Valdez oil spill case, the environmental tragedy helped shape his engagement in environmental justice, and health and safety training for underserved communities to help restore contaminated brownfields. Eric formerly served as the Executive Director and CEO of [Cypress Mandela](#) where he helped develop training solutions to address infrastructure workforce demands for transportation, utility, building trades, environmental, and energy efficiency sectors. Cypress Mandela has attracted international attention for its economic development models utilizing emerging green technologies and climate change initiatives in underserved communities.

[Shayna Hirshfield-Gold](#) serves with the City of Oakland's sustainability team. She helps build out clean energy programs in support of the [City's Equitable Climate Action Plan \(ECAP\)](#) -- resilient and clean energy, building decarbonization, vehicle electrification, and urban forestry, while working with Oakland's environmental justice community to advance climate equity.

As their website states, "access to a future shouldn't be a privilege," [Rising Sun Center for Opportunity](#) builds career pathways for economic equity and climate resilience in the Bay Area and San Joaquin County. Climate Careers Director, [Glendie Domingo](#) and team provide training and job pathways for both youth through the Green House Calls Program, and adults, with a focus on empowering women to go into the building trades.

[Civicorps](#) has been transforming lives in the Bay Area for 40 years. Based in West Oakland and Contra Costa County, they run social enterprises and paid job training in conservation, wildfire management and recycling. Director of Community Engagement [Josepah A. Billingsley aka J.A.B.](#), has served since 1996. After practicing law for 16 years, he transitioned to serving juveniles and adults in youth development and workforce development programs, partnering with EBMUD, CalTrans, and other companies, participants build meaningful, quality careers while serving the health of our communities. His experience ranges from education, service, advising, supporting and advocacy among urban communities.

HOUSING + EMPLOYMENT: INTERSECTIONAL STRATEGIES

For years stalwart activists and policymakers have worked to abate our ever-growing housing crisis, while others continue to work tirelessly for everyone's right to quality, meaningful employment. It is beyond daunting to hold down a job without a stable home, and equally challenging to afford housing without a living wage. To solve our cities' most formidable and unrelenting problems, we are called to think outside our silos. Across the Bay Area, innovative organizations are doing just that – unleashing intersectional strategies to create economic opportunity and safe, affordable housing.

Facilitated by [Talia Nagar](#), Senior Program Officer, Employment at [Tipping Point Community](#). Tipping Point is committed to building a Bay Area where everyone can prosper. In 2023, their investments funded life-changing services in housing, early childhood, education, and employment for nearly 100,000 people across the Bay Area. They offer strategy and resources for some of the most promising solutions and organizations working on the frontlines to create real solutions to economic exclusion.

Dr. Noha Aboelata
Roots Community Health Center

Carolyn Johnson
Black Cultural Zone

Barrie Hathaway
JobTrain

POLICY EQUITY CONFERENCE
EXPANDING ECONOMIC & WORKFORCE
DEVELOPMENT OPPORTUNITIES
FRIDAY, MARCH 29, 2024 • 8:00 am - 5:00 pm

**PANEL EVENT: Housing + Employment:
Intersectional Strategies**

Thomas Lee
First Place for Youth

Facilitated by: Talia Nagar
Tipping Point Community

C2C
IMPACT ENGINE
COMMUNITY TO COMMUNITY

HOUSING + EMPLOYMENT: INTERSECTIONAL STRATEGIES

Since 2014, [Black Cultural Zone](#) CDC has been deploying programs to “keep Black folks in Oakland” through building partnerships and community power, securing land, creating a marketplace for entrepreneurs and small businesses, centering Black art and culture, hiring youth ambassadors, and supporting community-led projects in East Oakland. Led by CEO, [Carolyn Johnson](#), the organization has become an inspiration and model across our communities and the nation.

Fewer than half of all foster youth graduate high school on time, and fewer than 20% enroll in a four-year college. [First Place for Youth](#)'s Independent Living Skills Program offers a supportive atmosphere where youth can access educational support and career development. In California, 545 young adults gained housing, education, and employment coaching, CEO, [Thomas Lee](#) will share more about their successful, comprehensive models.

[Building Opportunities for Self-Sufficiency \(BOSS\)](#), who recently celebrated 50 years of service, tackles the root causes of poverty, homelessness, incarceration, and violence. CEO, [Donald Frazier](#) leads the organization's teams to support our unhoused neighbors to find and keep permanent housing, provide trauma recovery services and offer job readiness training.

Since 2008, [Roots Community Health Center](#), has been providing essential services for the wellbeing of East Oaklanders, prioritizing men without traditional avenues for support. With the leadership of CEO, [Dr. Noha Aboelata](#), their holistic approach offers medical and behavioral health care, workforce enterprises, housing, outreach, and advocacy. They act on the belief that health is a prerequisite for sustainable employment and entrepreneurship and that stable income is a contributor to good health.

CLOSING PERFORMANCE + THANK YOU!

FRIDAY, MARCH 29, 2024 • 8:00 am - 5:00 pm

POLICY EQUITY CONFERENCE

EXPANDING ECONOMIC & WORKFORCE
DEVELOPMENT OPPORTUNITIES

Nairobi Williese Barnes, 2023 Oakland
Youth Poet Laureate

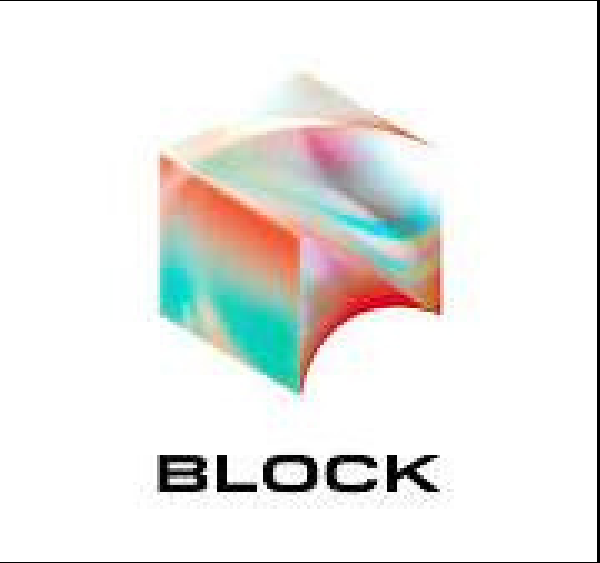


Nairobi Barnes' many accomplishments include winning the Superior and Impressive Writing Chops award at her high school, a published op-ed in Teen Vogue, a published poem in 2016 book Accomplished, and a collection of poems by The American Library of Poetry. Nairobi defines herself as a poet, artist, and activist. She has created educational videos and press releases about topics including voting rights, discrimination against Black women, and Black hair and how it defines her culture. As a woman who leads with her heart, her words have never steered her wrong and with every new journey she embarks on, a poem follows. Nairobi attends Merritt College in Oakland.

OAKLAND LIBRARY YOUTH POET LAUREATE PROGRAM

THANK YOU!

SPONSORS & SUPPORTERS



CONFERENCE DESIGN & PROMOTIONAL PARTNERS



**THANK YOU TO OUR LOCAL BUSINESSES:
CATERING AND MEDIA SUPPORT!**



BIG LOVE TO RAS K'DEE, ANA RODRIGUEZ, AHMED ALI BOB, DISTRICT WORKS' HOSPITALITY CREW, THE FACILITATORS -TALIA NAGAR, CARRIE MAULTSBY-LUTE, SOFIA NAVARRO- AND TO ALL OF THE PRESENTERS FOR YOUR GENEROSITY AND LEADERSHIP!

THANK YOU TO THE NU STAFF AND ALL THE FANTASTIC VOLUNTEERS!

ABOUT C2C IMPACT ENGINE

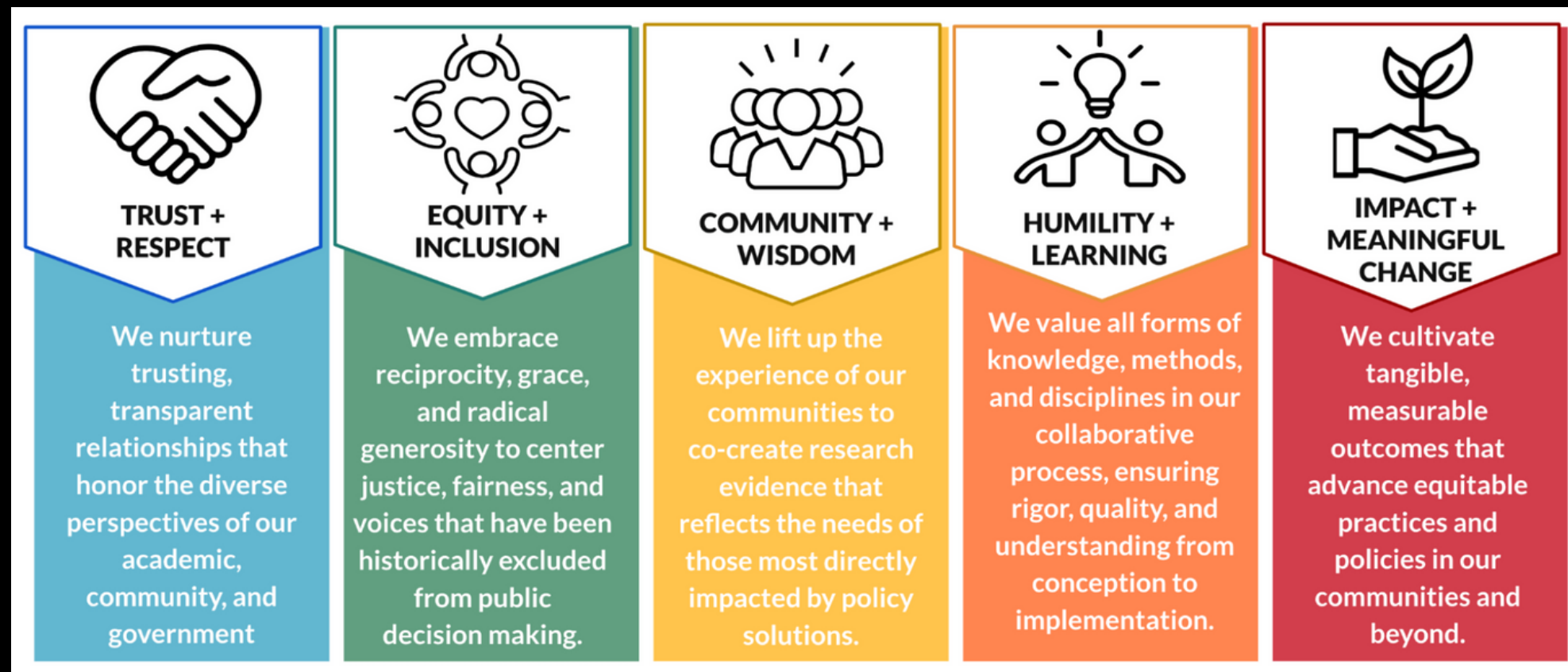
Vision

We envision a world connected by thriving communities where shared knowledge creates equitable access to purpose, power, and prosperity.

Mission

Our mission is to understand and address social disparities by fostering trusting relationships between academic researchers and community or government partners. Centering the wisdom of community voices, we co-create research evidence that advances equitable practices and policies in the places our university calls home.

Values

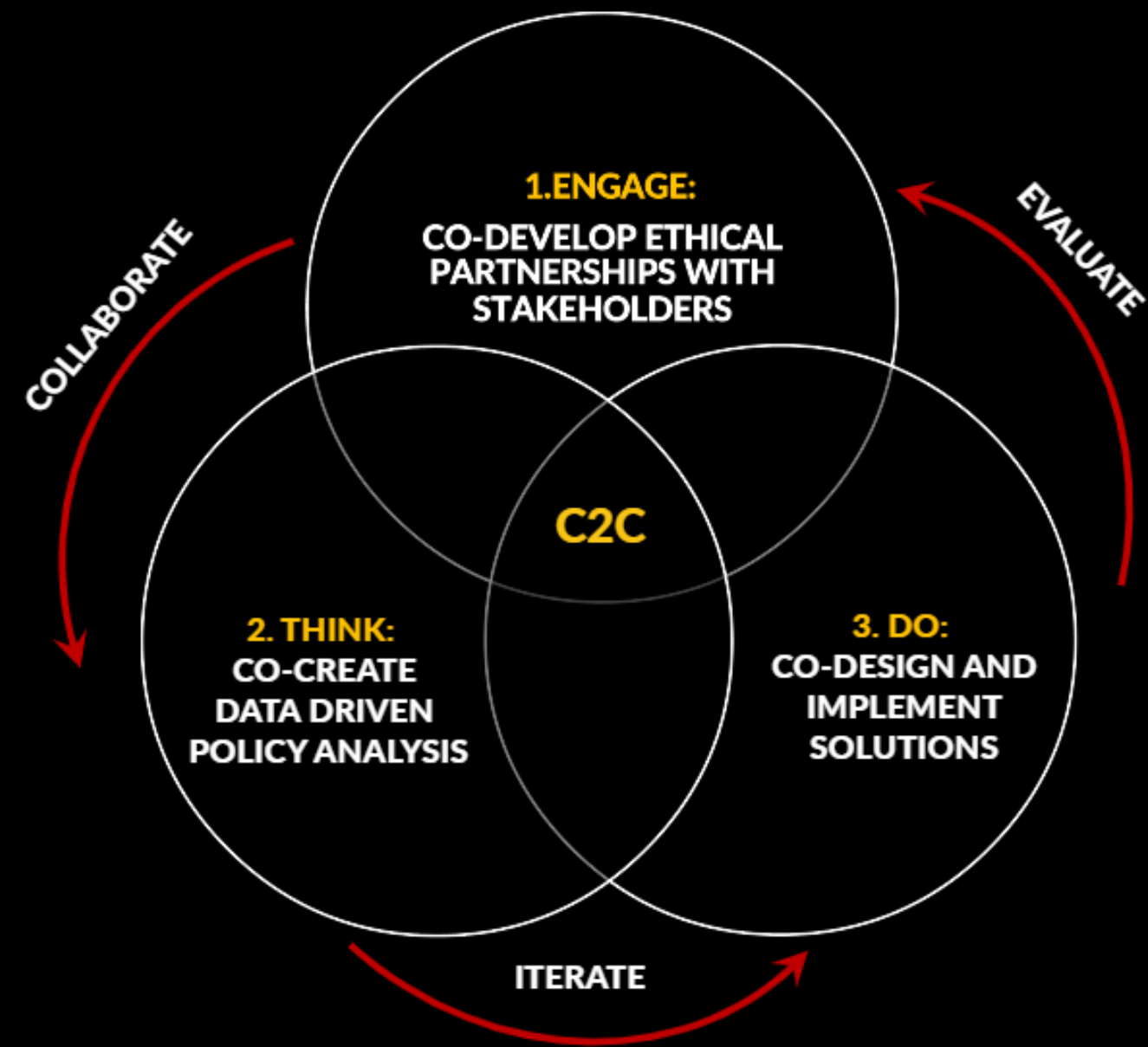


Community to Community (C2C) uses data and analysis to design, implement, and evaluate public policies that push the needle forward on complex problems found in urban areas. We are scholars, researchers, policymakers, students, and community organizers working together to utilize a community-engaged research approach that fosters long-term mutually beneficial partnerships.

OUR COMMUNITY ENGAGED MODEL

ENGAGE - THINK - DO

- Fosters long-term, mutually beneficial partnerships (ENGAGE) with external stakeholders.
- Promotes the co-production of policy analysis (THINK) and implementation (DO) to maximize societal impact.
- Iterates and evaluates to move the needle on societal problems at the local level.



SUMMER YOUTH LEARN AND EARN PROGRAM EXPANDING IN 2024

- Over 160 high school students participated in our inaugural learn-and-earn summer jobs program in [Boston](#) and [Oakland](#).
- Participants included more than 95% BIPOC youth from underrepresented communities.
- College prep and career readiness curriculum was delivered with the support of community partners.
- C2C [research](#) has led to large investments in summer youth employment programs in Boston. We want to support similar studies and investments in Oakland.

“I feel very prepared for fall because of this program. This program really cares about our future.”

--Northeastern Summer Jobs Participant

[Teens don't have to choose between learning and having a summer job, thanks to Northeastern program, NGN](#)



OAKLAND C2C POLICY FELLOW

DR. ASHLEY ADAMS

Descendant Survey and Genealogy Database Project

This project seeks to enhance the involvement of African American descendants and prioritize efforts for a future genealogy database for Nicodemus, Kansas. Nicodemus was founded by formerly enslaved African Americans in 1877 and was declared a National Historic Site by Congress in 1996. This project aims to advance equity by creating a new descendant survey model that is applicable for other historic Black settlements, like Allensworth, California. In partnership with the Nicodemus Historical Society, Nicodemus Homecoming Committee, and National Park Service, the project aims to create an African American descendant survey model to track ancestral roots for reparative justice policymaking.



POLICY PARTNERS:

ANGELA BATES, EXECUTIVE DIRECTOR, NICODEMUS HISTORICAL SOCIETY
GREGORY K. EADS, SUPERINTENDENT, NICODEMUS NAT'L HISTORICAL SITE



Northeastern University
Community to Community
Policy Equity for All

OAKLAND C2C POLICY FELLOW

DR. MARIO HERNANDEZ

Community Innovation Lab: Countering Gentrification

Dr. Shellae Versey and Mario Hernandez are co-developing a Community Innovation Lab to serve as a central resource for academics, activists and policy makers working to counteract the harmful effects of gentrification. Given the rapid pace of displacement in cities around the world, The Lab will serve as a collective hub and incubator for innovative ideas and creative solutions for preserving and improving communities facing the threat of displacement and other harmful consequences of gentrification. The Lab will examine both policy and community-led initiatives to characterize the full scope and success of anti-displacement measures. Partnering with Homies Empowerment, a grassroots organization based in Oakland that focuses on the city's youth. Our goal is to evaluate pilot efforts centered on a recent acquisition of a property in East Oakland to convert into affordable housing. The program may serve as a model for sustainable community-led land reclamation and anti-displacement strategies in communities around the country.



POLICY PARTNERS:

G.T. REYES, ASSOCIATE PROFESSOR OF EDUCATIONAL LEADERSHIP, CSU EAST BAYBOARD MEMBER, HOMIES EMPOWERMENT



Northeastern University
Community to Community
Policy Equity for All

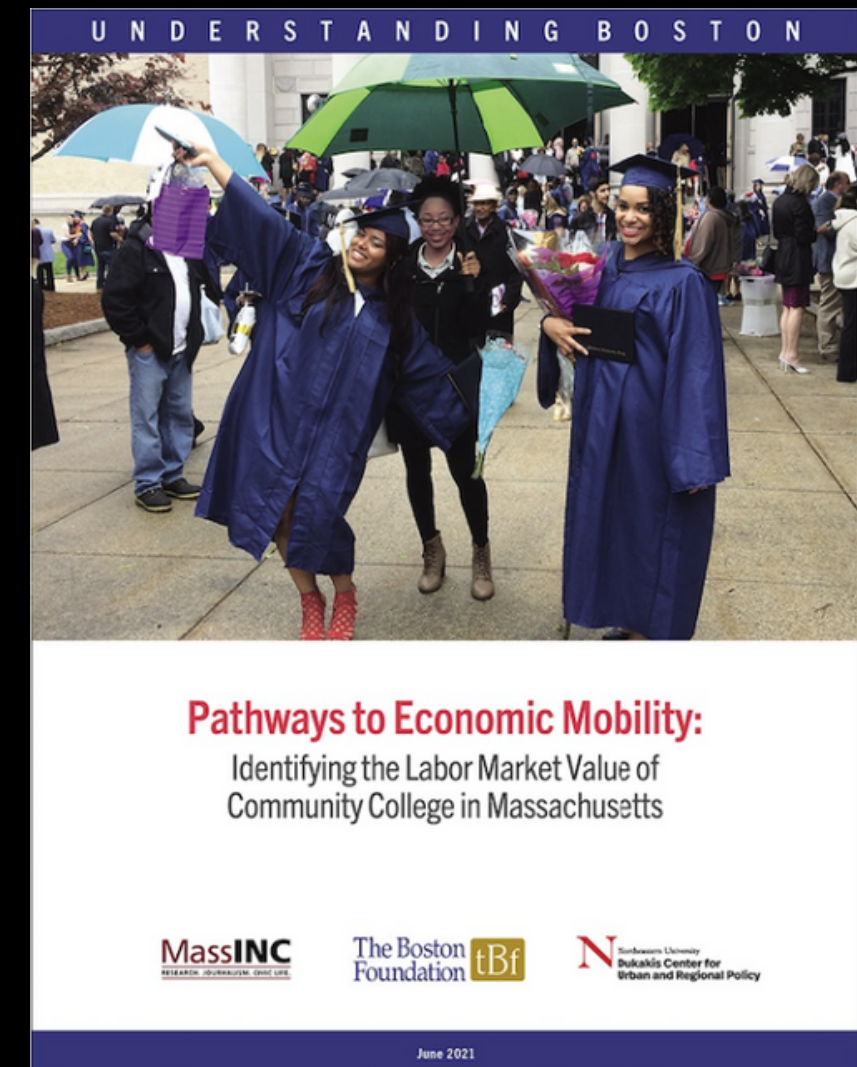
ACHIEVING MEANINGFUL POLICY WINS

Tuition Free Community College

- City of Boston cited C2C research as motivation for the \$4 million expansion of their Tuition Free Community College Program
- Adopted recommendations based on C2C report to expand the enrollment period, provide stipends for all Pell-eligible students, and include short-term certificates as well as associate's degrees
- C2C will study the impacts of the newly expanded program over the next three years with funding from the Department of Labor.

In the News:

[\\$14 Million Investment to Expand Boston's Tuition-Free Community College Program](#)



[Pathways to Economic Mobility: Identifying the Labor Market Value of Community College in Massachusetts](#)

 **Northeastern University**
Community to Community
Policy Equity for All

ACHIEVING MEANINGFUL POLICY WINS

Summer Youth Employment

- Building on C2C research findings, Boston announced the City's largest investment ever (\$18.7M) in summer youth employment to support more than 7,000 jobs across city departments and local nonprofits.
- The City adopted recommendations based on a new [report](#) and job [matching algorithm](#) developed by C2C researchers to improve both efficiency and equity in youth job assignments.
- With funding from William T. Grant Foundation, C2C will continue to [provide research](#) that supports City efforts to increase job quality, ladder opportunities across summers, and badge skill development.



[Boston Mayor Michelle Wu](#) and
[C2C Director Alicia Sasser Modestino](#)



ACHIEVING MEANINGFUL POLICY WINS

Police Traffic Stops

- State AG Offices in Connecticut, Massachusetts & New Jersey cited C2C research in recent calls for greater transparency in policing.
- Adopted recommendations to obtain federal funding to track police traffic stops with greater accuracy and consistency.
- With funding from NIJ, C2C will study the impacts of newly expanded data collection and oversight on discrimination in police traffic stops.



SUPPORTING RESEARCH PRACTICE PARTNERSHIPS

FOR PRACTITIONERS AND POLICYMAKERS

- Pitch a Project
 - “No wrong door” to seek research assistance from capstone teams to graduate students to faculty experts
 - Sourced 5 new projects with external entities
- Executive Education
 - Joint with Jameel Abdul Latif Poverty Action Lab at MIT
 - 30+ public policy professionals across Boston and Oakland
 - 4 virtual sessions covering how to use research evidence
 - 2 virtual sessions dedicated to developing research projects

SEED GRANT WINNERS: OAKLAND

[See all project descriptions here](#)



CLIFFORD LEE

Creative Industry Pathway and the Future of Oakland



NNEKA ALLEN HARRISON

Bay Area Black Voices: Employment Outcomes of the Black Labor Force in The San Francisco Bay Area



JOHN ALEXIS GUERRA GOMEZ

Interactive Visual Exploration of opioid exposure on Preterm Births in Oakland, California



MIKI HONG

Understanding the Role of Tobacco Control in Community Health for Underrepresented Groups



ADAM PARKER

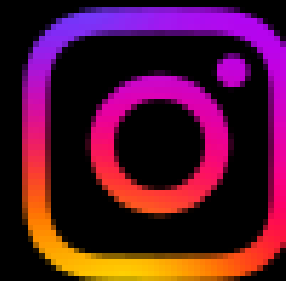
Care Can't Wait



Northeastern University
Community to Community
Policy Equity for All

LEARN MORE - JOIN OUR COMMUNITY!

- The C2C [website](#) will keep you up-to-date - bookmark us!
- C2C's [quarterly newsletter](#) informs, inspires and provides key resources to our growing list of 2,400+ subscribers and diverse stakeholders - take a read!
- Our new [publication series](#) features policy briefs, research reports, and working papers covering the latest C2C research - check it out!
- [Pitch a Project](#) “No wrong door” to seek research assistance from capstone teams to graduate students to faculty experts
- Sourced 5 new projects with external entities
- [Executive Education](#) with [Jameel Abdul Latif Poverty Action Lab at MIT](#)



Northeastern University
Community to Community
Policy Equity for All